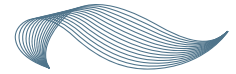


CREPE MYRTLE

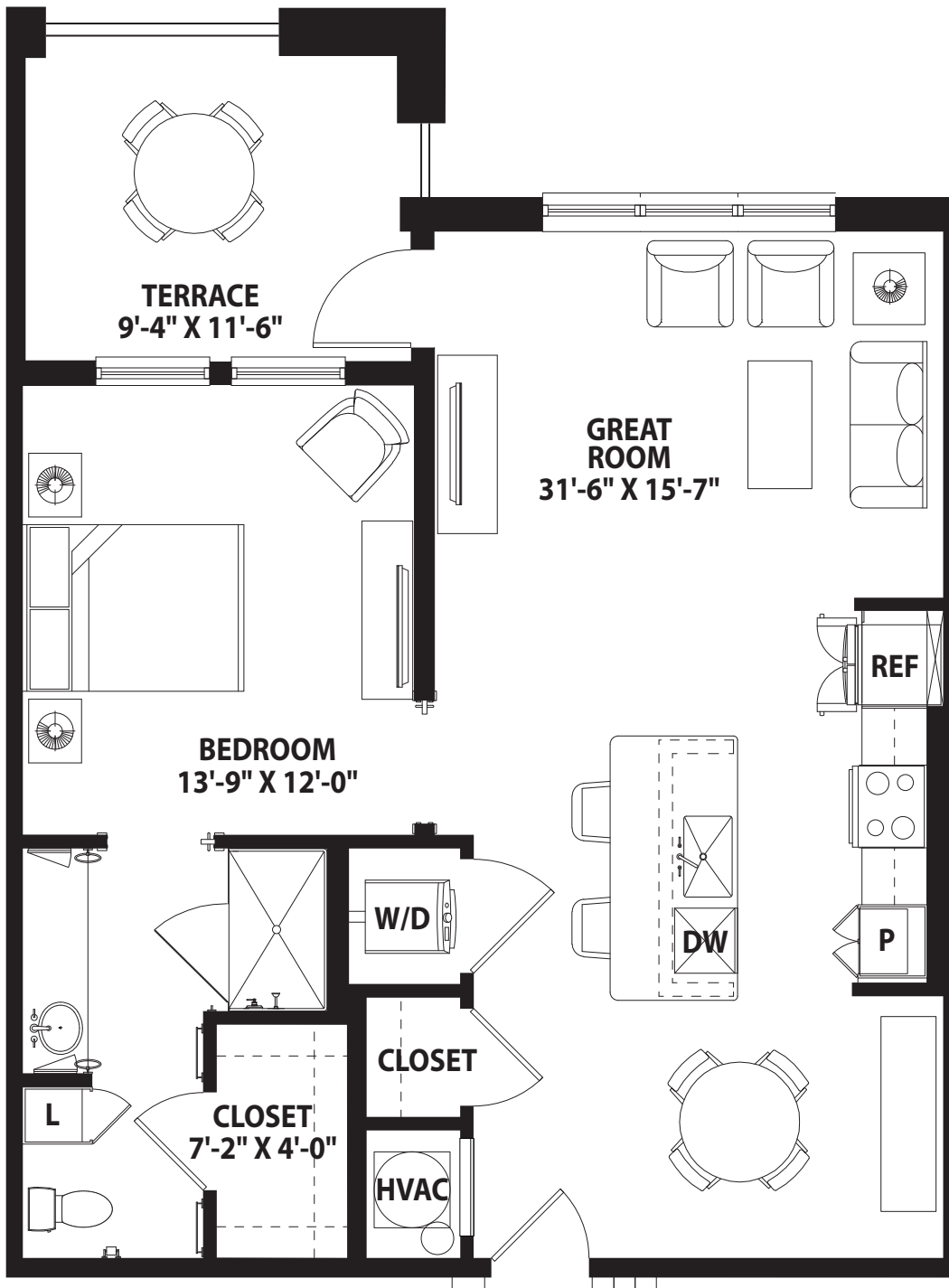


PRESBYTERIAN
VILLAGE NORTH

FOREFRONT LIVING

● 1 BEDROOM, 1 BATH

Approx. 912 sq. ft.* | Colored circle corresponds to the legend on each Level Plan.



Apartment #: _____

Entrance Fee: \$ _____

Reservation Deposit: \$ _____

Monthly Service Fee: \$ _____

8600 Skyline Drive | Dallas, TX 75243
214.355.9935 | presvillagenorth.org

*Size and dimensions may vary
3/16" scale

